

Culture Collection of Microorganisms (KKM)

Faculty's Core Facility Laboratories and Collections
Faculty of Biology
University of Warsaw
Ilji Miecznikowa 1, 02-096 Warsaw, Poland

E-mail: kolekcja.kultur@uw.edu.pl

PRICE LIST FOR THE DEPOSITION OF MICROORGANISMS IN KKM

(FEES FOR THE EMPLOYEES OF THE UNIVERSITY OF WARSAW)

FIRST CONTACT KKM

Before submitting the material, please confirm that the KKM has the technical capacity to store the biological material in question.

Next, please refer to the Deposition Instructions.

CALCULATING THE PRICE

Price (PLN) depends on the culture conditions and the number of strains in a single deposit order.

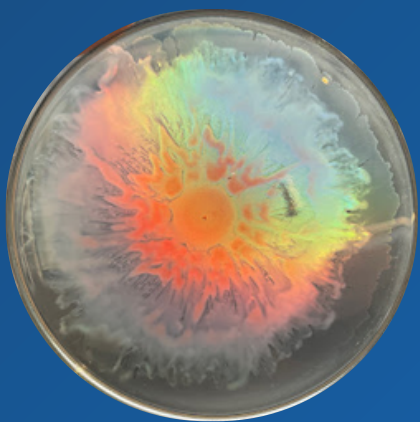
[Prepayment option available.](#)

CULTURE MEDIUM

If the required culture medium is not available in KKM (besides LB and MH), it can be supplied with the strain.

The price list is valid until 30th June 2026.

Prices will be updated in January and July each year.



Culture Collection of Microorganisms (KKM)

SAFE DEPOSIT

(ACCESS RESTRICTED TO THE DEPOSITOR)

BASIC

Number of strains deposited by a single order	1	10	>10
standard media/ customised media; aerobic conditions	70/90	60/80	50/70
standard media/ customised media; microaerobic or anaerobic conditions	100/120	90/110	80/100

assessment of homogeneity of culture (Gram staining)

freezing in 3 vials (replicates)*

possibility of 3 revivals per year

free maintenance for 2 years

each next year of deposit is charged 3 PLN/year/strain

COMFORT

Number of strains deposited by a single order	1	10	>10
standard media/ customised media; aerobic conditions	130/150	120/140	110/130
standard media/ customised media; microaerobic or anaerobic conditions	160/180	150/170	140/160

assessment of homogeneity of culture (Gram staining)

freezing in 3 vials (replicates)*

possibility of 5 revivals per year

free maintenance for 3 years

each next year of deposit is charged 3 PLN/year/strain

confirmation of strain classification by 16S rRNA gene sequencing**

viability check (revival from all three replicates after 3 months)

SAVE THE BOX

A space in the freezer will be made available for a fee:

Paid fixed storage period: **Limited availability!**
• 400 PLN/box/year;
• Maximum storage duration 3 years

material in KKM boxes

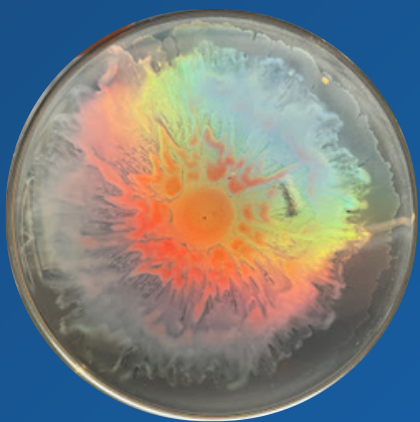
material not verified by KKM

12 times access to the box/year

*Freezing: 2 vials in two different freezing media in the back-up freezer; 1 vial in the preferred freezing medium in the main freezer.

** If another marker gene (other than 16S rRNA) needs to be used for molecular confirmation, the analysis will be performed after the appropriate primers have been supplied by the Depositor.

E-mail: kolekcja.kultur@uw.edu.pl



FUTURE PUBLIC DEPOSIT

(PUBLIC ACCESS IN THE OPEN CATALOGUE)

COMFORT

Number of strains deposited by a single order	1	10	>10	The cost of 100 PLN (MALDI-TOF analysis) should be added to the price <u>of each strain</u> .
standard media/ customised media; aerobic conditions	130/150	120/140	110/130	
standard media/ customised media; microaerobic or anaerobic conditions	160/180	150/170	140/160	

assessment of homogeneity of culture (Gram staining)

freezing in 3 vials (replicates)*

possibility of 3 revivals per year

confirmation of strain classification
by 16S rRNA gene sequencing**

viability check (revival from all three replicates
after 3 months and every 5 years)

MALDI-TOF spectrum analysis

public access through the Open Catalogue

unlimited free maintenance***

*Freezing: 2 vials in two different freezing media in the back-up freezer; 1 vial in the preferred freezing medium in the main freezer.

** If another marker gene (other than 16S rRNA) needs to be used for molecular confirmation, the analysis will be performed after the appropriate primers have been supplied by the Depositor.

*** Please acknowledge that once the strain is listed in the Open Catalogue as a Public Deposit, KKM acquires full rights to administer the material, and it can be revoked from the Open Catalogue or disposed of at anytime by KKM only.

E-mail: kolekcja.kultur@uw.edu.pl